

# Bluefin CPTLKIT Copper Press Tool w/ 1/2", 3/4", 1" Jaws

## General Information

- Designed in conjunction with the Viega ProPress system, JW, Nibco, REMS, Conex fittings with stop, ensuring total system compatibility.
- Jaws compatible with ZLTLKIT Zoomlock fitting press tool.
- 360 degree rotary head.
- Sturdy tool body and flexible telescopic handles give users a fresh using experience.

## Specifications

### TOOLING



Model	CPTLKIT
Capacity	1/2", 3/4", 1"
Net Weight	8.2 lbs
Gross Weight	12.7lbs

### JAWS



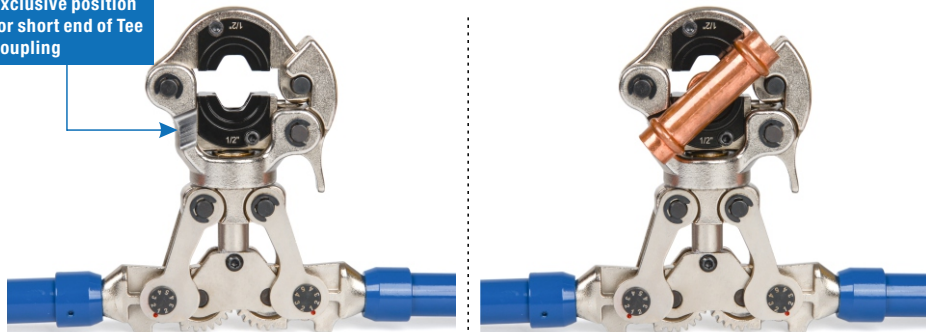
1/2" Jaws

3/4" Jaws

1" Jaws

### NOTE

Exclusive position for short end of Tee coupling



## Instruction



### 1.CUTTING THE TUBE

- Cut the tube square using a displacement-type cutter or fine toothed saw.

**i** Avoid cutting through grooves, manufacturer's stamps, or engravings on the tube surface.

**Note:** Cut tubing a minimum of four inches away from the contact area of the vise to prevent possible damage to the tubing in the press area.

### 2.DEBURRING THE TUBE

- Deburr inside and outside of the tube to the proper insertion depths.
- Use a wire brush, Scotchbrite pad, sand cloth, or sandpaper to remove loose dirt and rust particles from the pressing area.



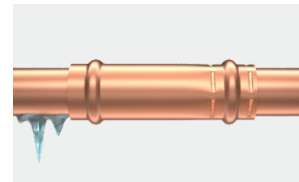
#### Damage resulting from the wrong deburring tool

- Connections may leak if they are damaged by improper deburring.
- Failure to deburr tubing will reduce the service life of the system and can cause premature leaks.

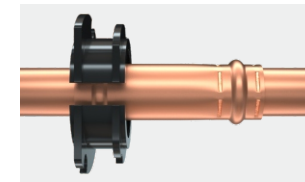
The tube ends must be thoroughly deburred after cutting. Damage to or twisting of the sealing element during installation is prevented by deburring.



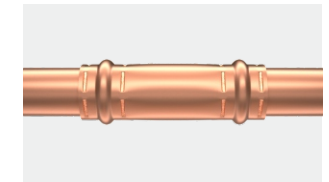
### 3.PRESSING THE FITTING



- Identify an unpressed connection during pressure testing when water or air flows past the sealing element.



- Use the press tool to make a permanent connection.



- Connections are fast, flameless and guaranteed.

## Care of Tool

There is virtually no maintenance required. However, it's good practice to keep indenter tips free of residual deposits and other debris.

We strongly recommend that you:

- Clean tool to remove debris regularly.
- Don't spray oil into tool to lubricate.
- Don't attempt to disassemble tool or make repairs.

This is a precision hand crimp tool and should be handled as such.